

YALE CAMERA MOUNT PLATE



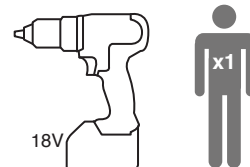
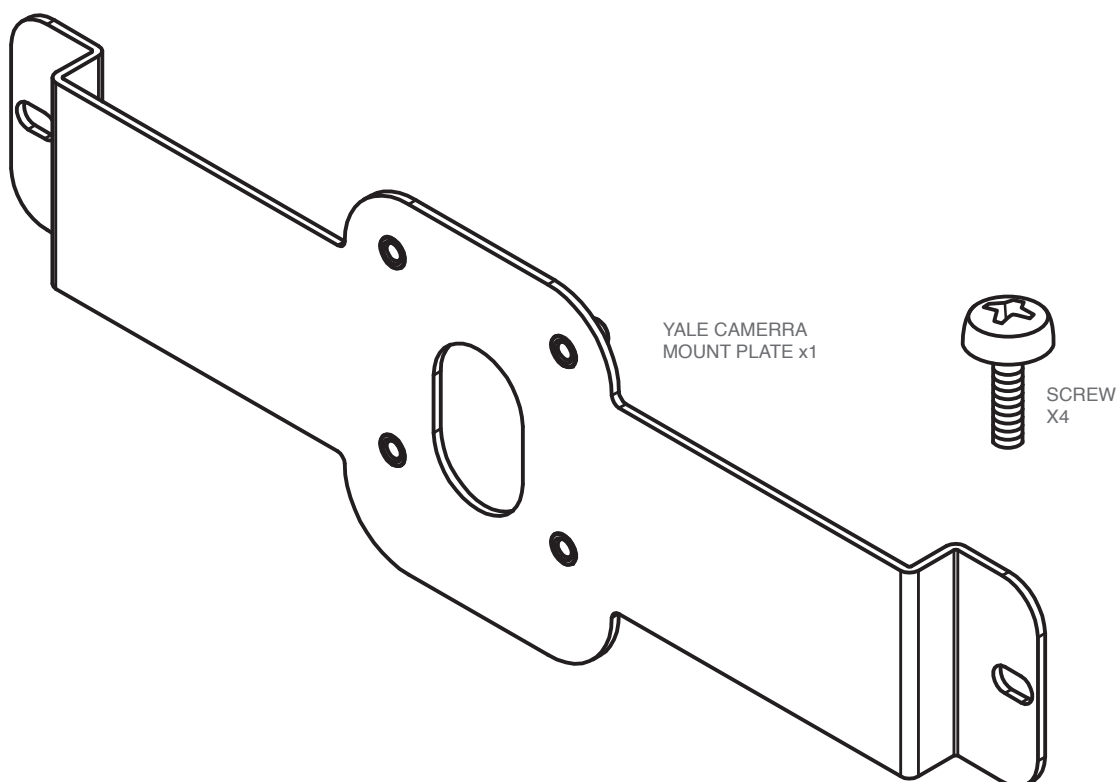
COMPATIBILITY

Centurion and Gladiator Bike and Motorcycle Sheds

PLEASE NOTE Asgard do not fit cameras as part of our standard installation service. These are customer fit only products.

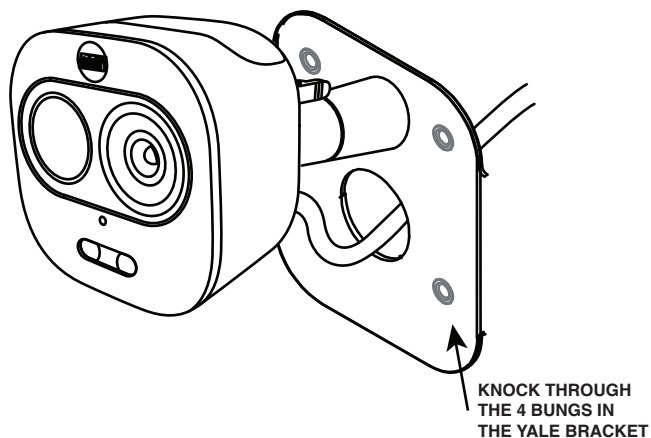
TOOLS REQUIRED

Stanley knife, Philips Screwdriver PZ2

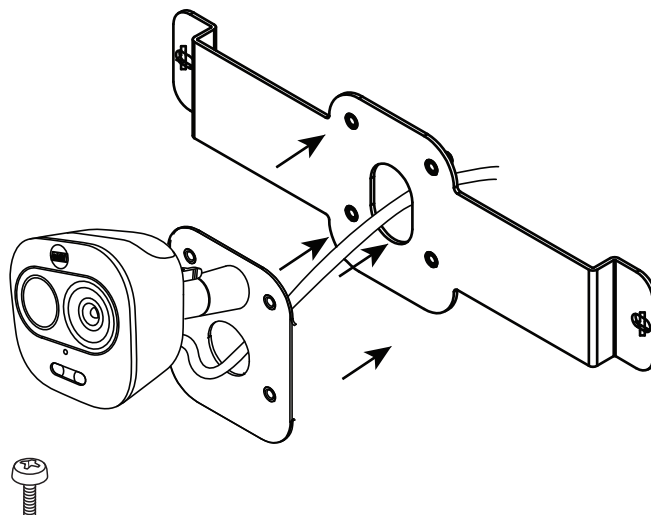


For maintenance instructions of this product visit www.asgardsss.co.uk

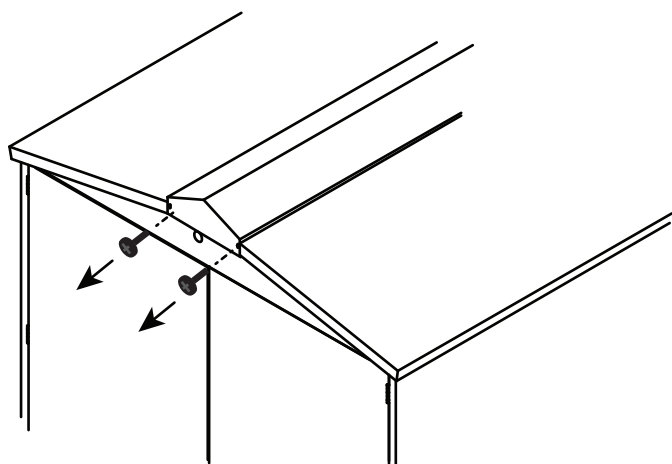
1! ASSEMBLE THE CAMERA & THREAD THE ELECTRICS THROUGH THE HOLE.



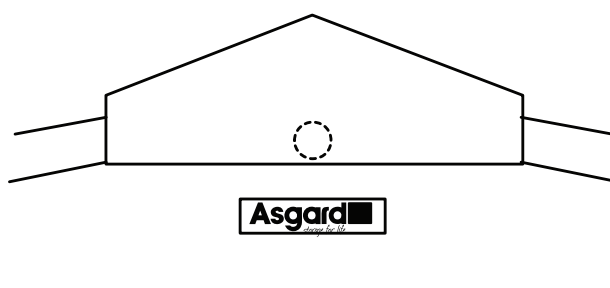
2! THREAD THE WIRE THROUGH THE ASGARD BRACKET AND FIX TOGETHER



3! REMOVE THE TWO FASCIA SCREWS

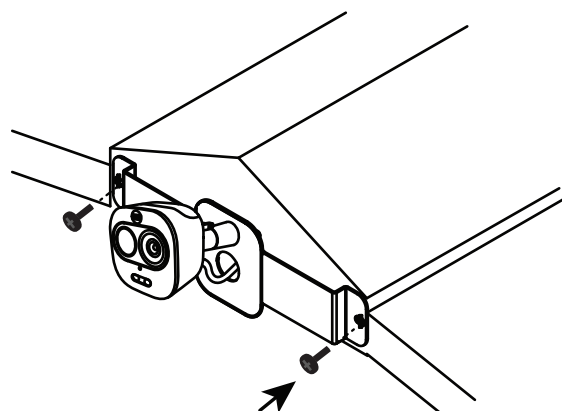


4! TWIST TO POP OUT THE PRE-CUT HOLE ABOVE THE BADGE



FOR OLDER SHEDS YOU WILL NEED TO DRILL A 25MM HOLE ABOVE THE ASGARD BADGE AS FAR UP AS POSSIBLE & SEAL WITH ANTI-RUST

5! THREAD THE WIRE THROUGH THE FASCIA HOLE & SCREW IN THE BRACKET



6! CUT THE BUNG & THREAD THROUGH OVER THE USB. PUSH IT INTO THE HOLE TO SEAL

